



# MONTHLY MEMBERSHIP PROGRESS REPORT

District 324A6

Results as of: 06/30/2019

GMT: N S SANKAR

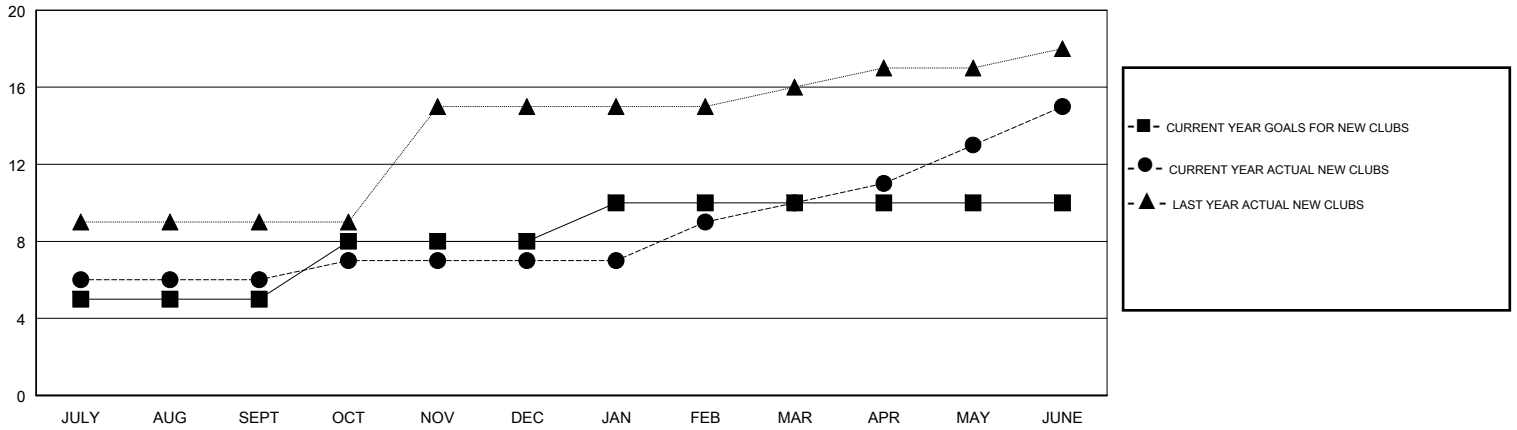
LOCATION INDIA

GMT CA

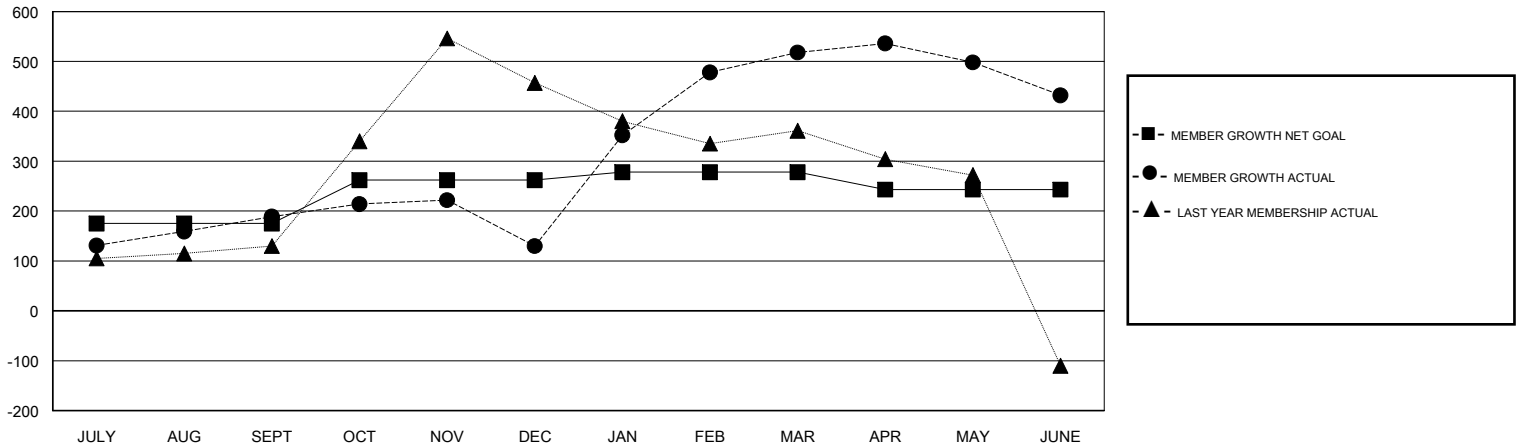
Clubs			
RESULTS FOR 2018-2019			
QUARTER	NEW CLUB GOAL	NEW CLUBS	DROPPED CLUBS
JULY/AUG/SEPT	5	6	1
OCT/NOV/DEC	3	1	2
JAN/FEB/MAR	2	3	0
APR/MAY/JUNE	0	5	0

Members			
RESULTS FOR 2018-2019			
QUARTER	MEMBER GROWTH NET GOAL	MEMBER GROWTH ACTUAL	DROPPED MEMBERS ACTUAL (including transfers)
JULY/AUG/SEPT	175	351	135
OCT/NOV/DEC	87	69	128
JAN/FEB/MAR	16	448	35
APR/MAY/JUNE	-35	387	463

GOALS AND ACTUAL NEW CLUBS CUMULATIVE



GOALS AND ACTUAL MEMBERS CUMULATIVE



DROPPED CLUBS: 3	116 CLUBS OF 144 ADDED 1 OR MORE NEW MEMBERS	<u>GENDER DISTRIBUTION</u>	
DROPPED MEMBERS		MALE	3,561 (70.61%)
DECEASED	13	FEMALE	1,482 (29.39%)
CLUB CANCELLED	35	Women Percentage Fiscal Year Goal: 28%	
OTHER	713	TOTAL FAMILY UNIT MEMBERS	2,893
TOTAL	761	FAMILY MEMBERS PAYING HALF DUES	1,693

[CLICK HERE FOR CUMULATIVE MEMBERSHIP DATA](#)